



**Space No. 1: DAF offices**

Availability: Q2 2015  
 Divisible: on the initiative of the occupant  
 Total area: 1 025 m<sup>2</sup>  
 - Furnished offices: 690 m<sup>2</sup>  
 - Aménageables : 335 m<sup>2</sup>

Offer: on 2 levels, 23 office spaces, 2 meeting rooms in perfect condition, with nearby private parking spaces.

Best for: Offices

**Location map**



**Location and access**

Port area: PRCN  
 Address: 1 rue de la Côte d'Ivoire

Access: RN 237 (2x2 lanes), International Airport La Rochelle-Ile de Ré 5 minutes, TGV 2h50 minutes from Paris

Site: In the immediate vicinity of the southern and dry docks

**Photo of the north facade**



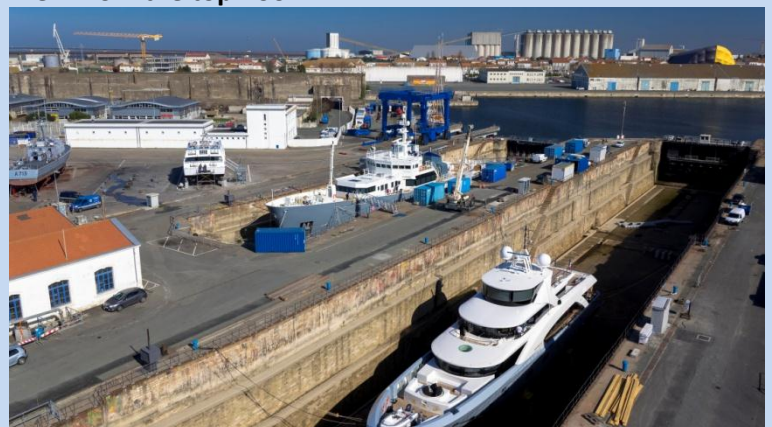
**Equipment and utilities**

Security: controlled access zone, closed offices with access control  
 Heating: Electric

**Easements and restrictions**

Zoning and PLU rules of La Rochelle: UPM  
 Web link: <http://www.ville-larochelle.fr/cadre-de-vie/urbanisme/plan-local-durbanisme.html>  
 PPR area: NO

**View from the top floor**



**Fee and other information**

Contact us