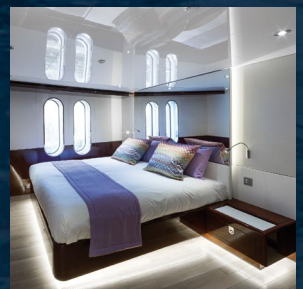
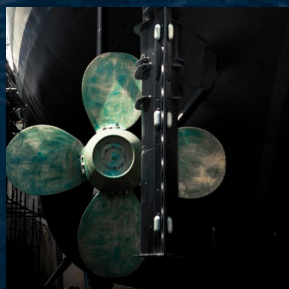
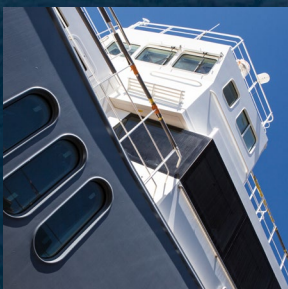


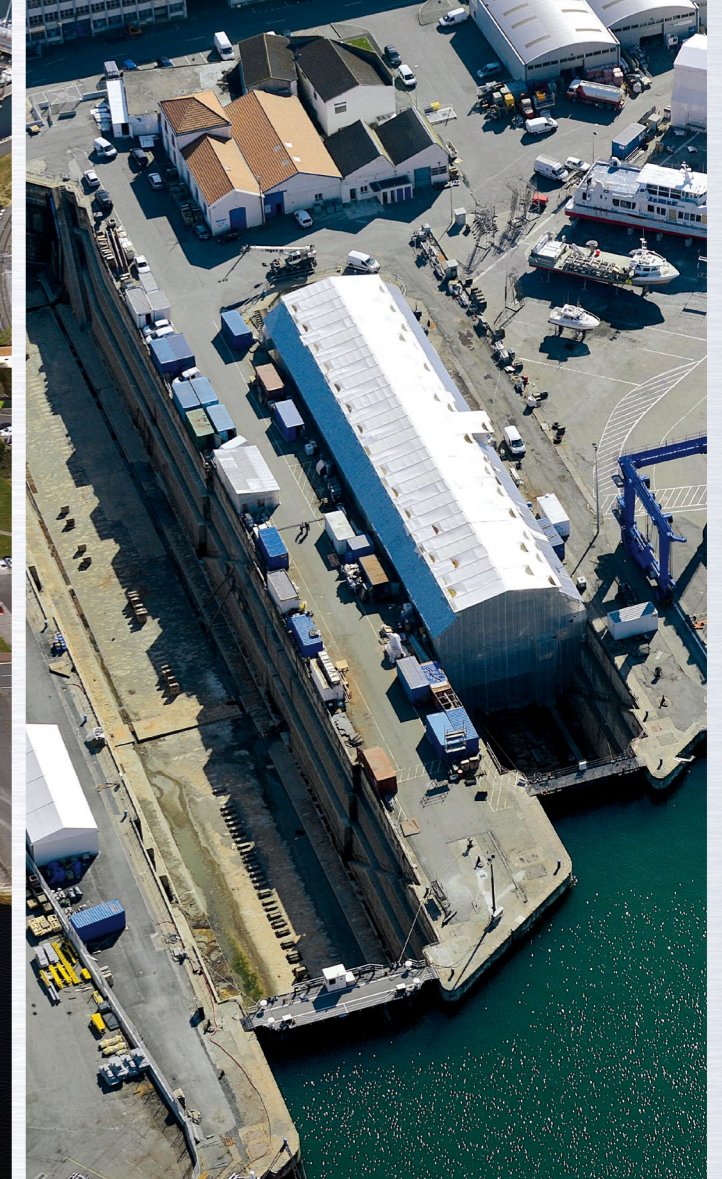


# Atlantic Refit Center

---

Dedicated to large yachts



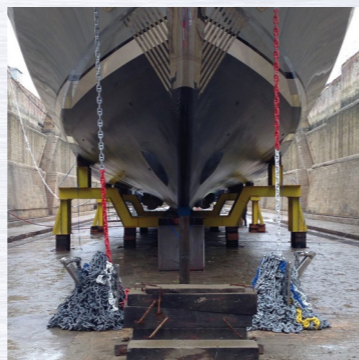
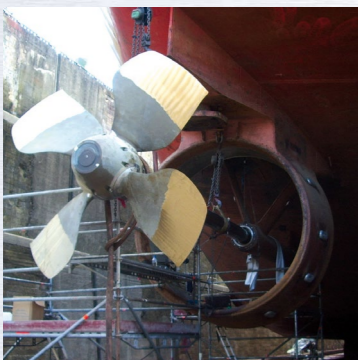


## Assured quality - Unique facilities - ISPS coded area

Atlantic Refit Center has the capacity to repair and refit super yachts of up to 150 metres in length. Our experienced team oversees the management of the shipyard and teams of sub contractors to ensure the highest quality finish to schedule.

Our unique facilities and expertise are ideal for work on super yachts from 25 metres to 150 metres in length with two dry docks.

- Dock 1 is 176 metres long by 21.86 metres in width,
- Dock 2 is 107 metres long by 13.84 metres in width,
- A 300 ton elevator,
- Mobile cranes on site up to 150 tons,
- 250 metres length a float repair docks,
- 2000 m<sup>2</sup> hard standing storage space.





Enigma XK before conversion



Enigma XK after conversion



Enigma XK after conversion



Enigma XK 72 m after conversion



## Tailored projects : conversion, refit

Each super yacht project is carefully planned in accordance with the work list and its possible amendments.

Implementing a quality control system that incorporates good administrative records ensures all our work is detailed and can be easily tracked and evaluated.

### Enigma XK, a rewarded conversion

«The conversion of superyacht Enigma XK from a British government-owned Fisheries Protection Vessel designed for service in the roughest of North Atlantic waters, into a comfortable and capable expedition yacht was extremely well done by the La Rochelle-based Atlantic Refit Center, according to the judges.»

Boat International Jury



Luerssen 72 m



CNB 30 m



Couach 50 m



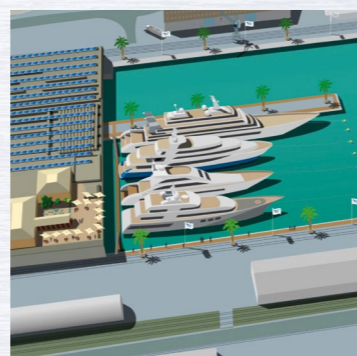
Feardship 56 m



## Development Plan

Développement plan in 3 phases :

- Permanent, sliding cover over the dry dock n°1 ①
- New 90 m length afloat repair dock ②
- New permanent repair shed on the hard for yachts up to 35 m in length ③
- New education center ④ and crew Club house ⑤
- New hard standing area for yachts up to 35 m with cover docks ⑥
- New berths "stern to" to accommodate mega yachts up to 150 m in length for winter period ⑦



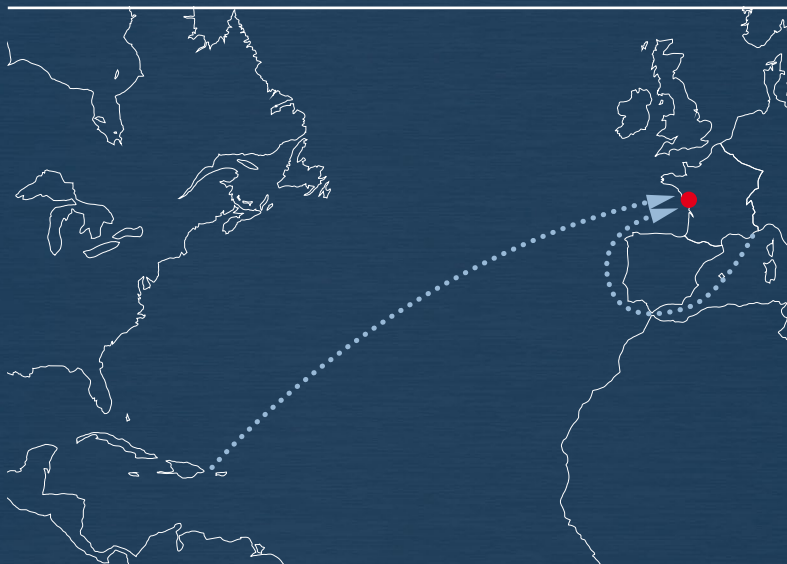
## Ideally situated

We are based in La Rochelle on the Atlantic coast, between Bordeaux and St-Nazaire. Atlantic Refit Center is a secured zone (full ISPS coded area) and occupies the only deep sea port on the French Atlantic coast accessible 24h/24 (11 m draft).

*Welcome to La Rochelle !*

*La Rochelle is a dynamic, welcoming and lively city all year long which will captivate you for some hours or days...*





# Atlantic Refit Center

Rue de la Côte d'Ivoire  
17000 La Rochelle - FRANCE

Mail : [info@atlanticrefitcenter.com](mailto:info@atlanticrefitcenter.com)

Tél./Fax : +33 (0)5 46 27 76 65

M. Stéphane Marcelli  
Mob. : +33 (0)6 75 24 75 85

[www.atlanticrefitcenter.com](http://www.atlanticrefitcenter.com)

